

# MONTHLY MEMBERSHIP PROGRESS REPORT

LOCATION NIGERIA

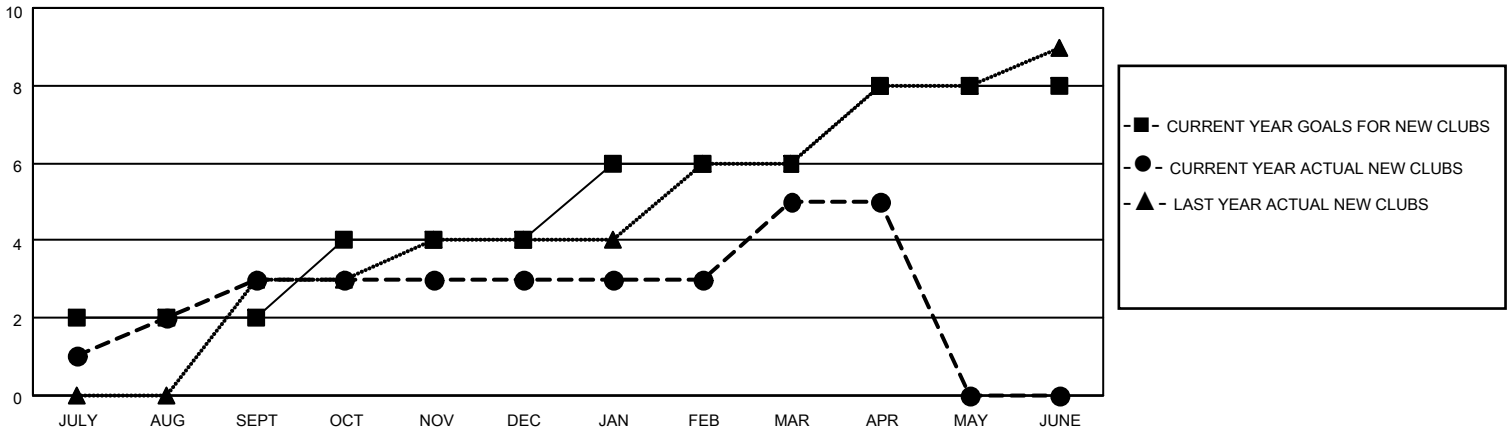
District 404 A1

Results as of: 4/30/2023

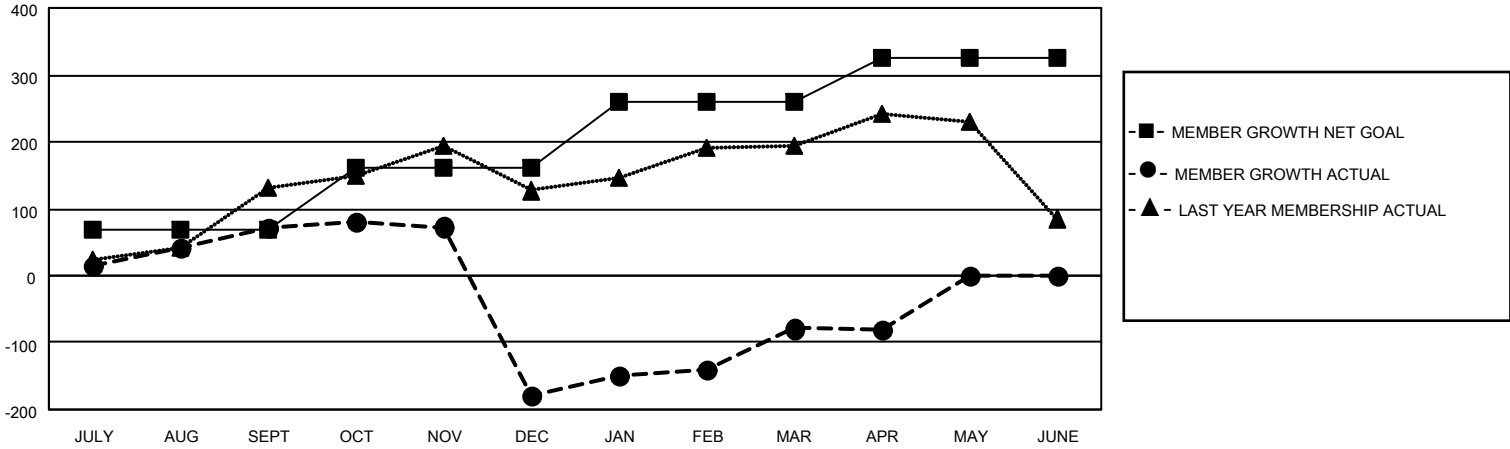
Clubs			
RESULTS FOR 2022-2023			
QUARTER	NEW CLUB GOAL	NEW CLUBS	DROPPED CLUBS
JULY/AUG/SEPT	2	3	0
OCT/NOV/DEC	2	0	9
JAN/FEB/MAR	2	2	0
APR/MAY/JUNE	2	0	0

Members			
RESULTS FOR 2022-2023			
QUARTER	MEMBER GROWTH NET GOAL	MEMBER GROWTH ACTUAL	DROPPED MEMBERS ACTUAL (including transfers)
JULY/AUG/SEPT	70	116	40
OCT/NOV/DEC	90	94	343
JAN/FEB/MAR	100	162	38
APR/MAY/JUNE	66	23	23

**GOALS AND ACTUAL NEW CLUBS CUMULATIVE**



**GOALS AND ACTUAL MEMBERS CUMULATIVE**



DROPPED CLUBS: 9	
<b>DROPPED MEMBERS</b>	
DECEASED	4
CLUB CANCELLED	145
OTHER	295
<b>TOTAL</b>	<b>444</b>

70 CLUBS OF 126 ADDED 1 OR MORE NEW MEMBERS

[CLICK HERE FOR CUMULATIVE MEMBERSHIP DATA](#)

<u>GENDER DISTRIBUTION</u>	
MALE	1,519 (56.13%)
FEMALE	1,187 (43.87%)
NON BINARY	0 (0.00%)
PREFER NOT TO ANSWER	0 (0.00%)
<b>TOTAL FAMILY UNIT MEMBERS</b>	<b>119</b>
<b>FAMILY MEMBERS PAYING HALF DUES</b>	<b>63</b>